



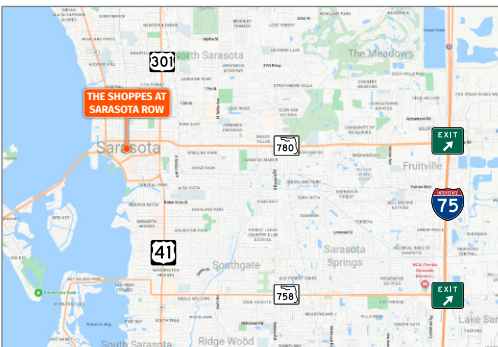
# THE SHOPPES AT SARASOTA ROW

# SARASOTA, FL

1451 1st Street, Sarasota, FL 34236



<b>MARKET:</b> Sarasota	<b>COUNTY:</b> Sarasota	<b>GLA:</b> ±59,341 SF	<b>TRAFFIC COUNT (COMBINED):</b> ±21,000
-------------------------	-------------------------	------------------------	--



- The Shoppes at Sarasota Row is an exceptional mixed-use complex nestled in the fast-growing downtown Sarasota, Florida market.
- The retail space sits on the ground floor of an 11-story, 95-unit residential tower, providing ample daily patronage
- Tenants at The Shoppes at Sarasota Row benefit from significant foot traffic driven by Whole Foods, one of the few grocers located in the densely populated Sarasota CBD.

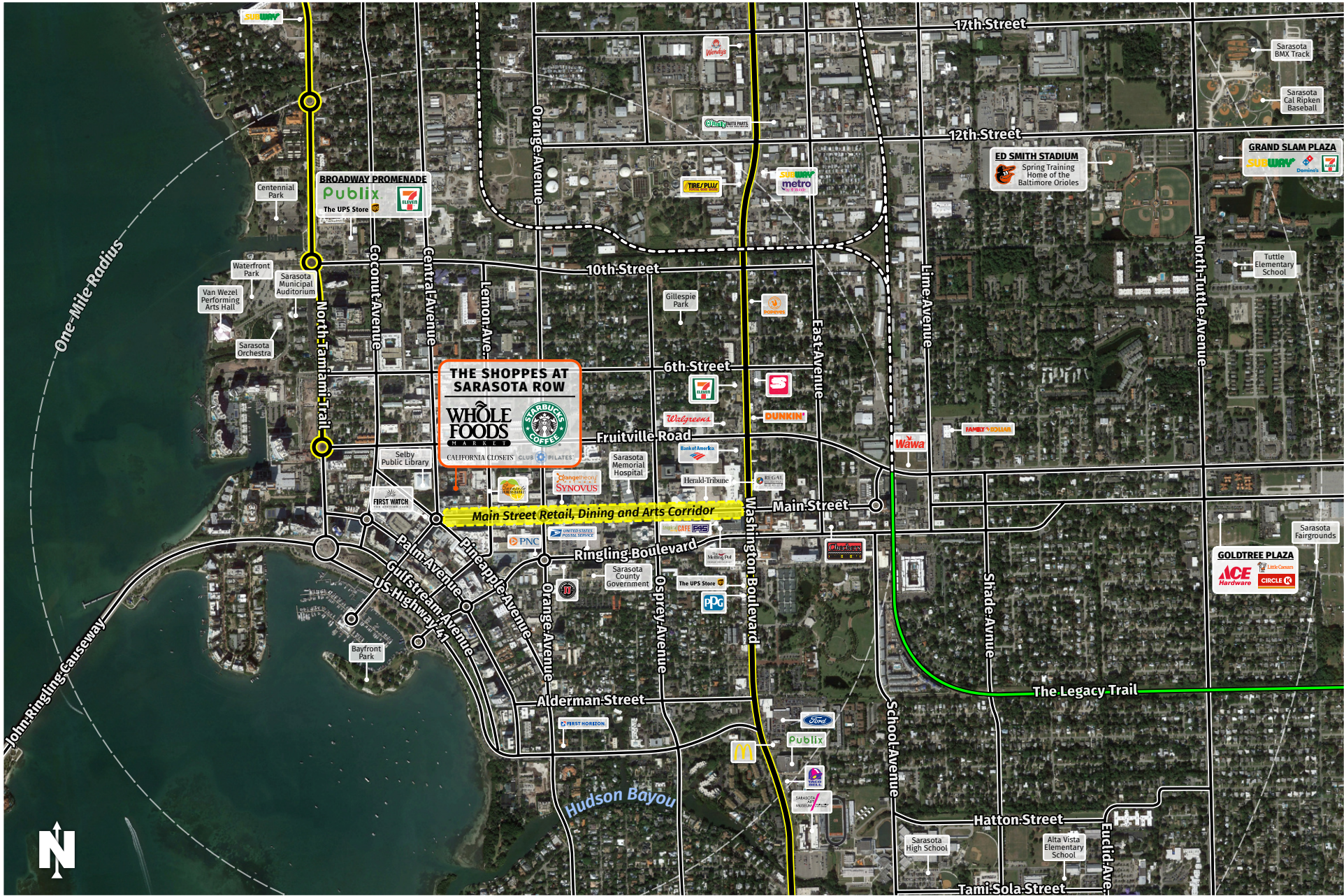
**MATTHEW SCOTT | LEASING AGENT**

[mscott@secenters.com](mailto:mscott@secenters.com)

(321) 677-0155 | Mobile (813) 765-2720



[WWW.SOUTHEASTCENTERS.COM](http://WWW.SOUTHEASTCENTERS.COM)



**MATTHEW SCOTT** | LEASING AGENT

msscott@secenters.com

(321) 677-0155 | Mobile (813) 765-2720

# THE SHoppes AT SARASOTA ROW

1451 1st Street, Sarasota, FL 34236



# THE SHOPPES AT SARASOTA ROW

TENANTS	UNIT	SIZE
Whole Foods Market	100	36,051 SF
Stylish Living	102	1,496 SF
Tweeds Custom Suits	104	1,493 SF
Nuovo Salon	108	3,012 SF
Paint Nail Bar	1010	1,105 SF
Man Cave	1012B	1,469 SF
Club Pilates	1012A	1,493 SF
California Closets	1014	1,491 SF
T. Georgiano's Shoe Salon	1015B	1,184 SF
Calvet Couture Bridal	1015A	1,125 SF
Goldfinger's Aesthetics	1016	689 SF
Surge Style	1018	552 SF
Starbucks	1020	1,513 SF
<b>Future Availability – Second Gen Restaurant</b>	<b>1022</b>	<b>3,099 SF</b>
Pecky Interiors	1026	3,200 SF



## DEMOGRAPHICS

## TOTAL POPULATION

## MEDIAN AGE

## AVERAGE HH INCOME

<b>1 MILE</b>	14,066	53.4	\$166,042
<b>3 MILES</b>	67,866	47.0	\$144,618
<b>5 MILES</b>	142,059	49.4	\$142,811

Southeast Centers offers best-in-class service and value creation through diligent, return-driven property management, leasing, development, and construction management.



This site plan shows the approximate location, square footage, and configuration of the shopping center and adjacent areas, and is only illustrative of the size and relationship of the stores and common areas generally, all of which are subject to change. The showing of any names of tenants, parking spaces, square footage, curb-cuts or traffic controls shall not be deemed to be a representation or warranty that any tenants will be at the shopping center, the square footage is accurate, or that any parking spaces, curb-cuts or traffic controls do or will continue to exist. Moreover, any demographics set forth in this flyer are for illustrative purposes only and shall not be deemed a representation by Landlord or their accuracy.