



# LECANTO PRESERVE

3440 West Gulf to Lake Highway, Lecanto, FL 34461

LECANTO, FL

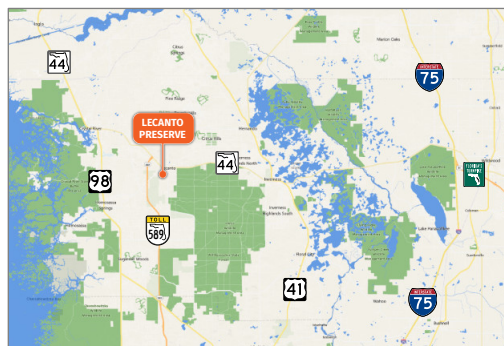


MARKET: West Florida

COUNTY: Citrus

GLA: ±74,637 SF

TRAFFIC COUNT: ±39,445 (Combined)



- Lecanto Preserve is a new planned use development slated to contain 30+ acres of proposed retail and outparcels, as well as 930+ residential units including single family homes and townhomes.
- Located in the fast-growing community of Lecanto, FL, conveniently located less than two miles from the recently opened Suncoast Parkway extension offering convenient access to Pasco and Hillsborough Counties.
- Multiple retail outparcel opportunities available fronting State Road 44 at a future signalized intersection. Proposed anchor space and adjacent shop space also available.

NOLAN COLLIER | LEASING AGENT

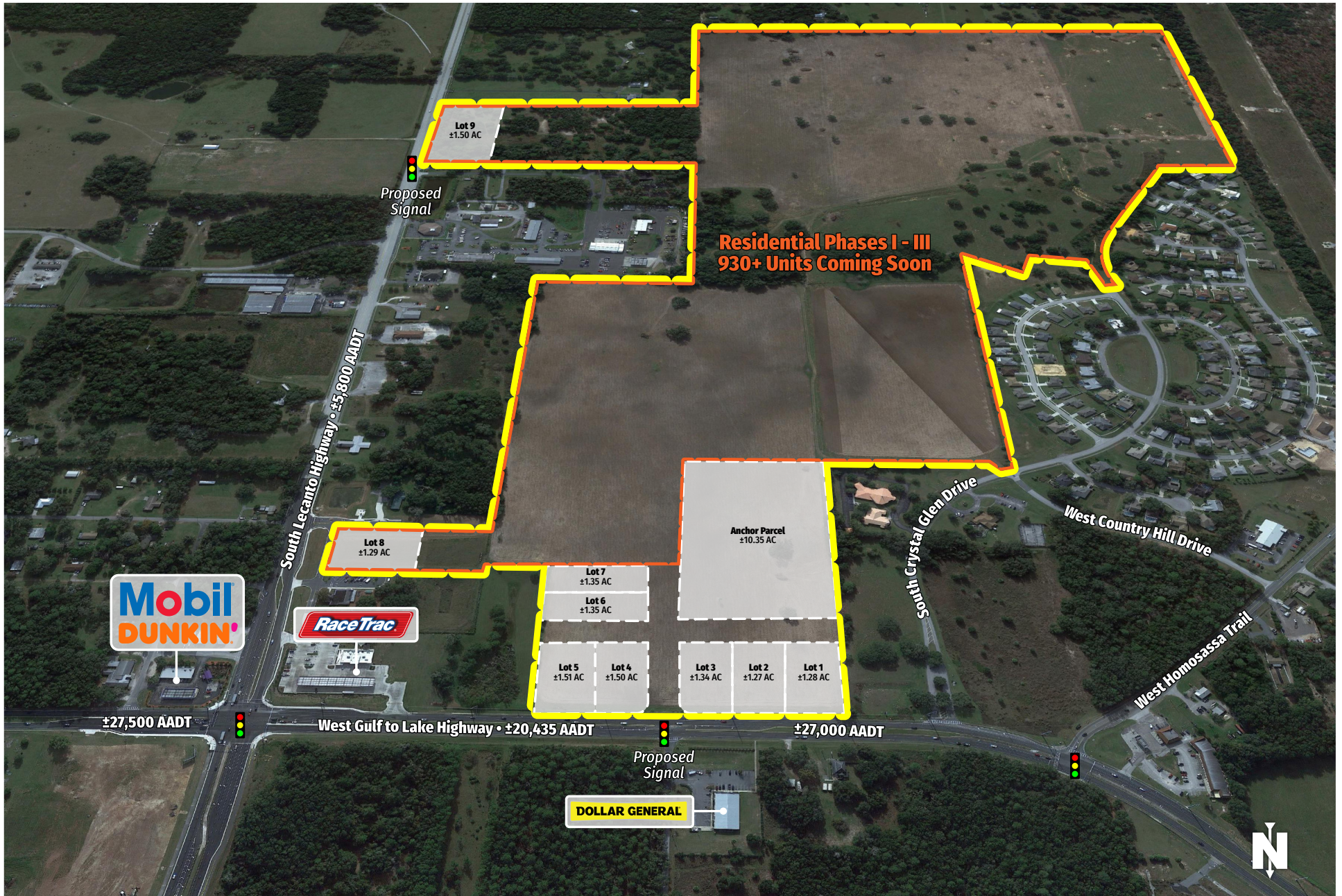
[ncollier@secenters.com](mailto:ncollier@secenters.com)

(321) 677-0155 | Mobile (407) 864-6897

**SOUTHEAST**  
CENTERS

[WWW.SOUTHEASTCENTERS.COM](http://WWW.SOUTHEASTCENTERS.COM)





NOLAN COLLIER | LEASING AGENT  
ncollier@secenters.com  
(321) 677-0155 | Mobile (407) 864-6897

**LECANTO PRESERVE**  
3440 West Gulf to Lake Highway, Lecanto, FL 34461

**SOUTHEAST  
CENTERS**





