



PUBLIX AT GULF COVE

13435 South McCall Road, Port Charlotte, FL 33981

PORT CHARLOTTE, FL

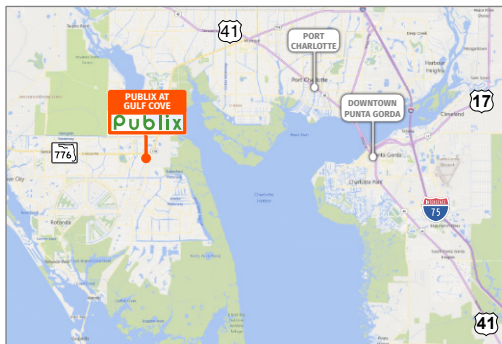


MARKET: Punta Gorda MSA

COUNTY: Charlotte

GLA: ±65,795 SF

TRAFFIC COUNT: ±35,700



- Publix at Gulf Cove is located at the intersection of State Route 776 and County Road 771 in northwest Charlotte County. The center's unique location provides exceptional exposure along the Charlotte County peninsula's primary thoroughfare, offering access to mainland Florida via the El Jobean Bridge three miles northeast of the center.
- The surrounding area is experiencing vibrant housing development activity.
- This Publix boasts robust sales and generates more traffic than a typical store, further contributing to the neighboring tenants' success.

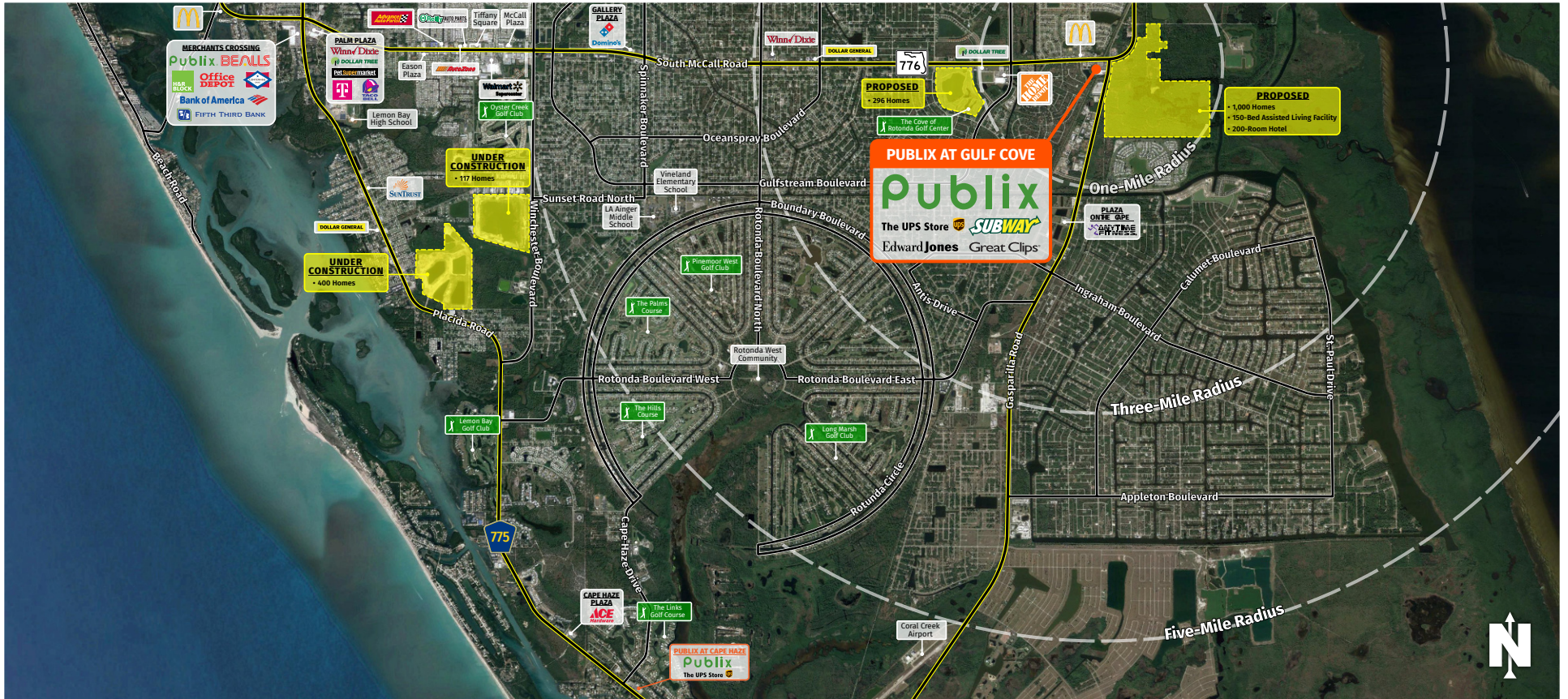
MATTHEW SCOTT | LEASING AGENT

mscott@secenters.com

(561) 347-0888 | Mobile: (813) 765-2720

SOUTHEAST
CENTERS

WWW.SOUTHEASTCENTERS.COM



MATTHEW SCOTT | LEASING AGENT

msscott@secenters.com

(561) 347-0888 | Mobile: (813) 765-2720

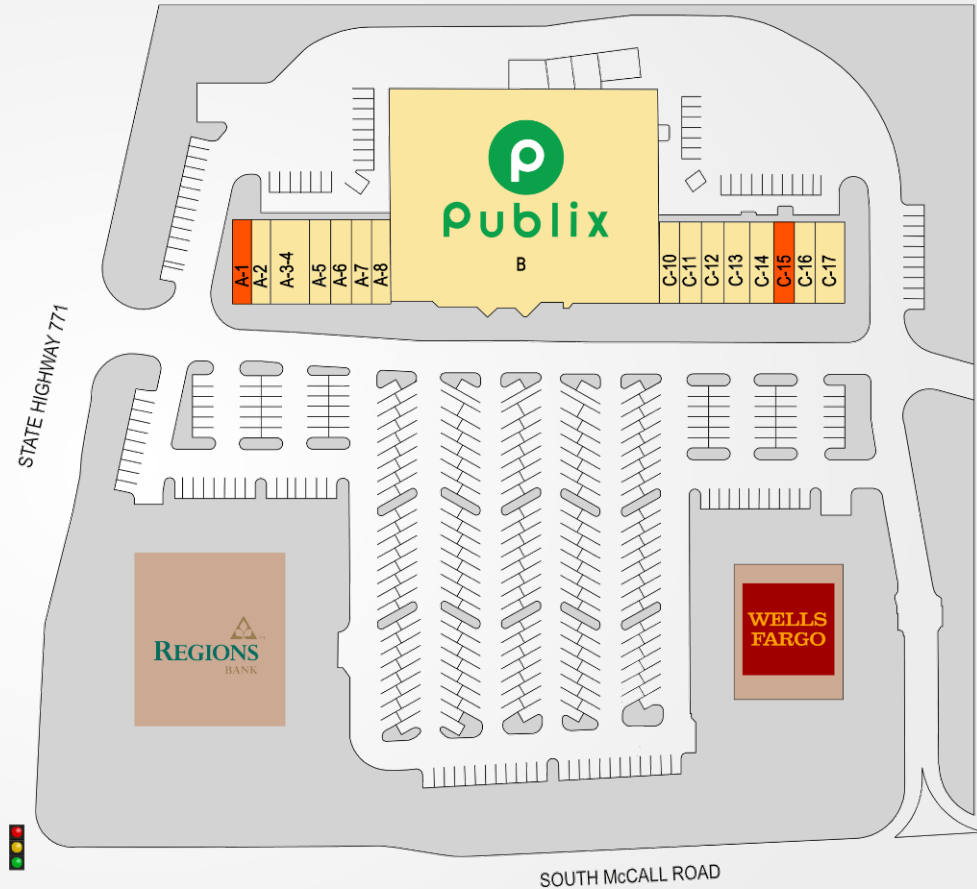
PUBLIX AT GULF COVE

13435 South McCall Road, Port Charlotte, FL 33981

SOUTHEAST
CENTERS

PUBLIX AT GULF COVE

TENANTS	UNIT	SIZE
Pending	A-1	1,225 SF
Edward Jones	A-2	1,050 SF
Leslie's Poolmart	A3-A4	2,450 SF
Subway	A-5	1,225 SF
Uncle Louie G Ice Cream	A-6	1,225 SF
Salty Waves Salon and Spa	A-7	1,225 SF
Publix Liquor	A-8	1,400 SF
Publix	B	44,270 SF
Coldwell Banker Sunstar Realty	C-10	1,400 SF
China Wok	C-11	1,050 SF
Great Clips	C-12	1,225 SF
Gel Nails	C-13	1,050 SF
Joe's Pizza	C-14	1,050 SF
Available	C-15	1,050 SF
The UPS Store	C-16	1,225 SF
Amber Dental	C-17	3,675 SF



13435 South McCall Road, Port Charlotte, Florida 33981

DEMOGRAPHICS	TOTAL POPULATION	MEDIAN AGE	AVERAGE HH INCOME
1 MILE	2,495	59.9	\$73,862
3 MILES	17,280	59.0	\$74,594
5 MILES	41,262	60.5	\$82,184

Southeast Centers offers best-in-class service and value creation through diligent, return-driven property management, leasing, development, and construction management.



This site plan shows the approximate location, square footage, and configuration of the shopping center and adjacent areas, and is only illustrative of the size and relationship of the stores and common areas generally, all of which are subject to change. The showing of any names of tenants, parking spaces, square footage, curb-cuts or traffic controls shall not be deemed to be a representation or warranty that any tenants will be at the shopping center, the square footage is accurate, or that any parking spaces, curb-cuts or traffic controls do or will continue to exist. Moreover, any demographics set forth in this flyer are for illustrative purposes only and shall not be deemed a representation by Landlord or their accuracy.