



PUBLIX AT STEEPLECHASE

14130 West Newberry Road, Newberry, FL 32669

NEWBERRY, FL

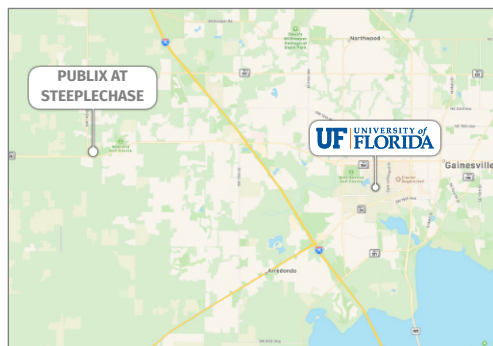


MARKET: North Florida

COUNTY: Alachua

GLA: ±65,960 SF

TRAFFIC COUNT: ±30,014 (Combined)



- Highest sales volume of 15 Publix grocery stores in the greater Gainesville, Florida market
- Tenants benefit from the affluent surrounding communities of Newberry and Jonesville with minimal market competition
- \$119,276 average household income within a three-mile radius
- Several significant residential projects planned/underway in the immediate trade area, including a 640-unit mixed-use development directly behind center
- A ±22,570-square-foot expansion with two junior box national tenants is in the planning stage adjacent to center at Jonesville Plaza.

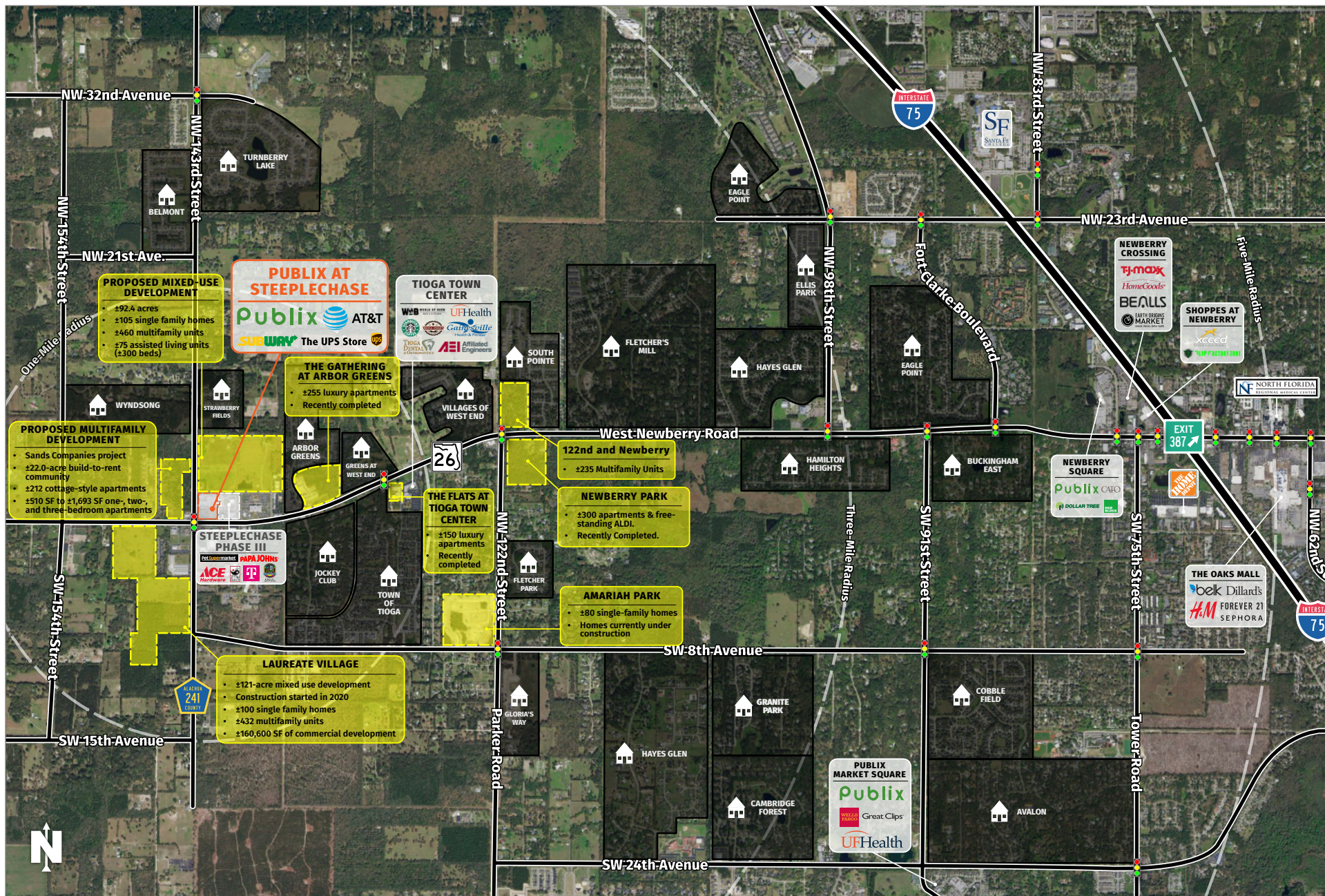
MATTHEW SCOTT | LEASING AGENT

mscott@secenters.com

(561) 347-0888 | Mobile: (813) 765-2720



WWW.SOUTHEASTCENTERS.COM



MATTHEW SCOTT | LEASING AGENT

msscott@secenters.com

(561) 347-0888 | Mobile: (813) 765-2720

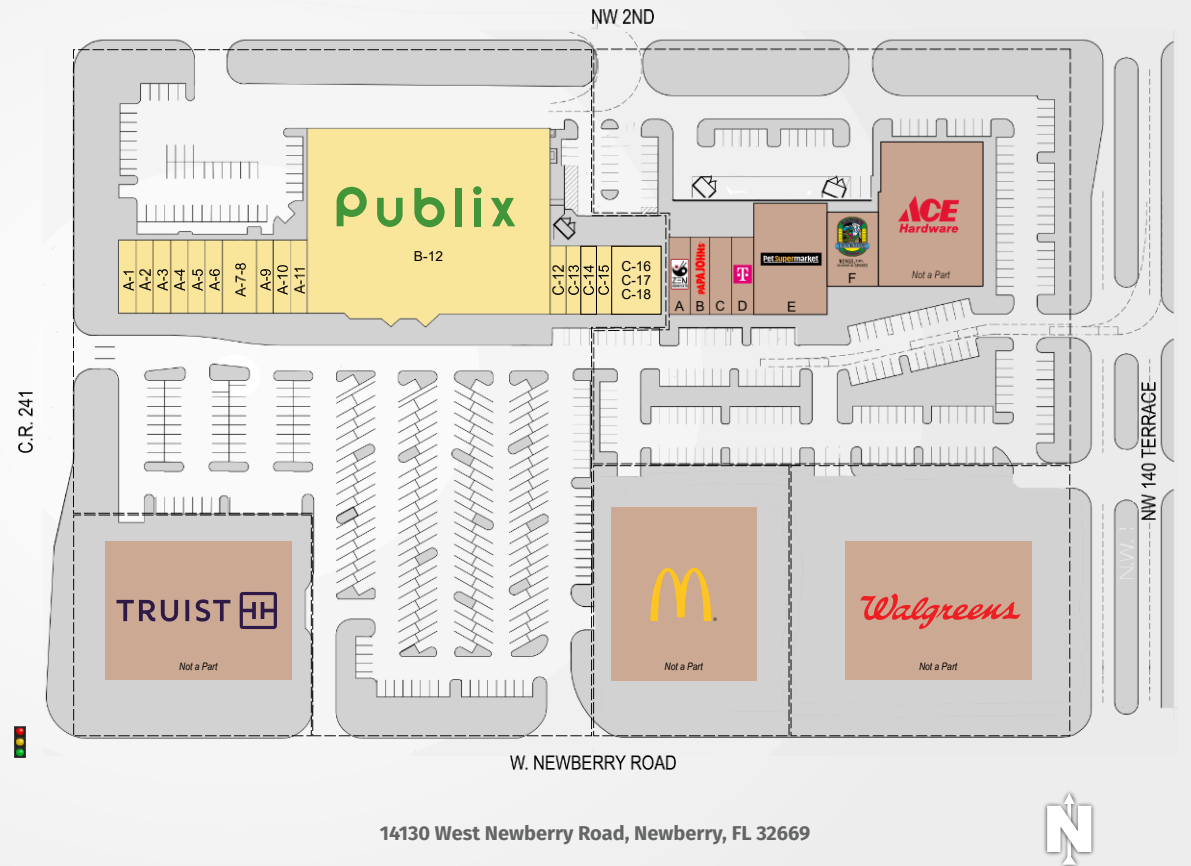
PUBLIX AT STEEPLECHASE

14130 West Newberry Road, Newberry, FL 32669

SOUTHEAST
CENTERS

PUBLIX AT STEEPLECHASE

| TENANTS | UNIT | SF |
|-----------------------------------|--------------------|-----------|
| Lifesouth Community Blood Centers | A-1 | 1,295 SF |
| The UPS Store | A-2 | 1,110 SF |
| Stretch Zone | A-3 | 1,110 SF |
| Subway | A-4 | 1,295 SF |
| Orchid Nails | A-5 | 1,110 SF |
| Green Tree Chinese | A-6 | 1,110 SF |
| O Sole Mio Restaurant | A-7 A-8 | 2,610 SF |
| Fuji Sushi | A-9 | 1,460 SF |
| Carob Diamond Company | A-10 | 1,480 SF |
| AT&T | A-11 | 1,110 SF |
| Publix | B-12 | 44,270 SF |
| Hair Cattery | C-12 | 1,400 SF |
| Brows Studio | C-13 | 1,050 SF |
| Eye Center | C-14 | 1,050 SF |
| U&B Liquor | C-15 | 1,350 SF |
| Top Hog BBQ | C-16 C-17 C-18 | 3,150 SF |



DEMOGRAPHICS

TOTAL POPULATION

MEDIAN AGE

AVERAGE HH INCOME

| | | | |
|---------|--------|------|-----------|
| 1 MILE | 4,173 | 40.9 | \$148,846 |
| 3 MILES | 16,731 | 41.0 | \$162,888 |
| 5 MILES | 48,890 | 38.4 | \$139,444 |

Southeast Centers offers best-in-class service and value creation through diligent, return-driven property management, leasing, development, and construction management.



This site plan shows the approximate location, square footage, and configuration of the shopping center and adjacent areas, and is only illustrative of the size and relationship of the stores and common areas generally, all of which are subject to change. The showing of any names of tenants, parking spaces, square footage, curb-cuts or traffic controls shall not be deemed to be a representation or warranty that any tenants will be at the shopping center, the square footage is accurate, or that any parking spaces, curb-cuts or traffic controls do or will continue to exist. Moreover, any demographics set forth in this flyer are for illustrative purposes only and shall not be deemed a representation by Landlord or their accuracy.