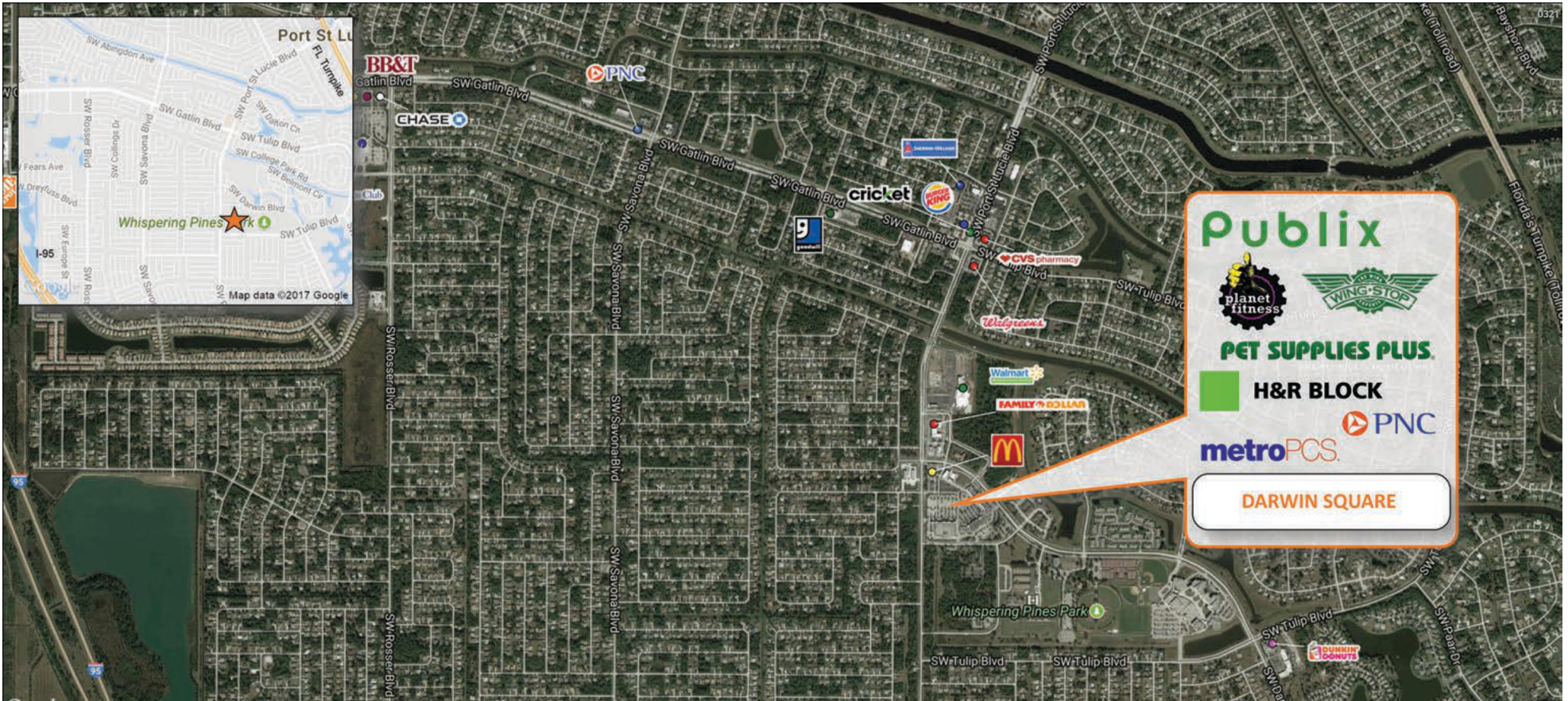




DARWIN SQUARE

3253 S.W. Port St. Lucie Blvd., Port St. Lucie, FL 34953

PORT ST. LUCIE, FL



MARKET: Central Florida

COUNTY: St. Lucie County

GLA: 127,918 SF

TRAFFIC COUNT: 20,794



	TOTAL POPULATION	MEDIAN AGE	AVG. HH INCOME
1 MILE	10,705	36.7	\$79,070
3 MILES	75,814	37.9	\$76,436
5 MILES	140,272	41.5	\$79,078

MEREDITH VOGEL | LEASING AGENT

mvogel@secenters.com

(561) 347-0888 | Mobile (561) 420-9718

SOUTHEAST CENTERS

WWW.SOUTHEASTCENTERS.COM

DARWIN SQUARE

TENANTS	UNIT	SF	TENANTS	UNIT	SF
Wingstop	1	2,000	Treasure Coast Hospice		
Available	4	1,195	Thrift Boutique	U106-U108	4,187
Massimos Pizza	5	1,910	CareNet Treasure Coast	62	1,525
Cell Medic	7	1,239	Available	64	1,345
ZINGA! Frozen Yogurt	10	1,860	Next Level Insurance	68	1,648
H&R Block	13	1,549	Chinatown Restaurant	70	1,324
Juice Bar Paradise	15	1,488	Available	73	1,150
Available	16	1,662	Publix Super Markets	E	54,340
Pet Supplies Plus	20A	8,492	Metro PCS	E101	1,350
Comp Liquors	20	1,858	Town Jewelers	E103	900
Jose A. Sarasola Dentistry	25	1,550	Available	E104	900
DC & Y Nails	26-27	1,859	The Boutique Hair Salon	E105	900
Planet Fitness	28-45	14,385	Leslie's Pool Mart	E106 - E108	2,700
Mane Design Haircuts	50	1,239			
Expedition Chiropractic	53	1,550			
Kaede Hibachi	U101	1,675			
Available	U102	1,256			
Keke's Breakfast Café	U103-U104	5,069			
Florida Community Health	U105	3,813			



3253 S.W. Port St. Lucie Blvd., Port St. Lucie, FL 34953

This bustling center is located at the intersection of SW Port St. Lucie Blvd and Darwin Blvd in the city of Port St. Lucie. The center features a collection of national and regional anchor tenants including Publix Supermarket, Planet Fitness, and Pet Supplies Plus. Darwin Square is centrally situated in a densely populated residential area providing an abundant and captive customer base. Additional national and franchise tenants at the center include H&R Block, Leslie's Pools, Metro PCS and Wingstop.

Best-in-class service and value creation through diligent, return-driven property management, leasing, development, and construction management



This site plan shows the approximate location, square footage, and configuration of the shopping center and adjacent areas, and is only illustrative of the size and relationship of the stores and common areas generally, all of which are subject to change. The showing of any names of tenants, parking spaces, square footage, curb-cuts or traffic controls shall not be deemed to be a representation or warranty that any tenants will be at the shopping center, the square footage is accurate, or that any parking spaces, curb-cuts or traffic controls do or will continue to exist. Moreover, any demographics set forth in this flyer are for illustrative purposes only and shall not be deemed a representation by Landlord or their accuracy.