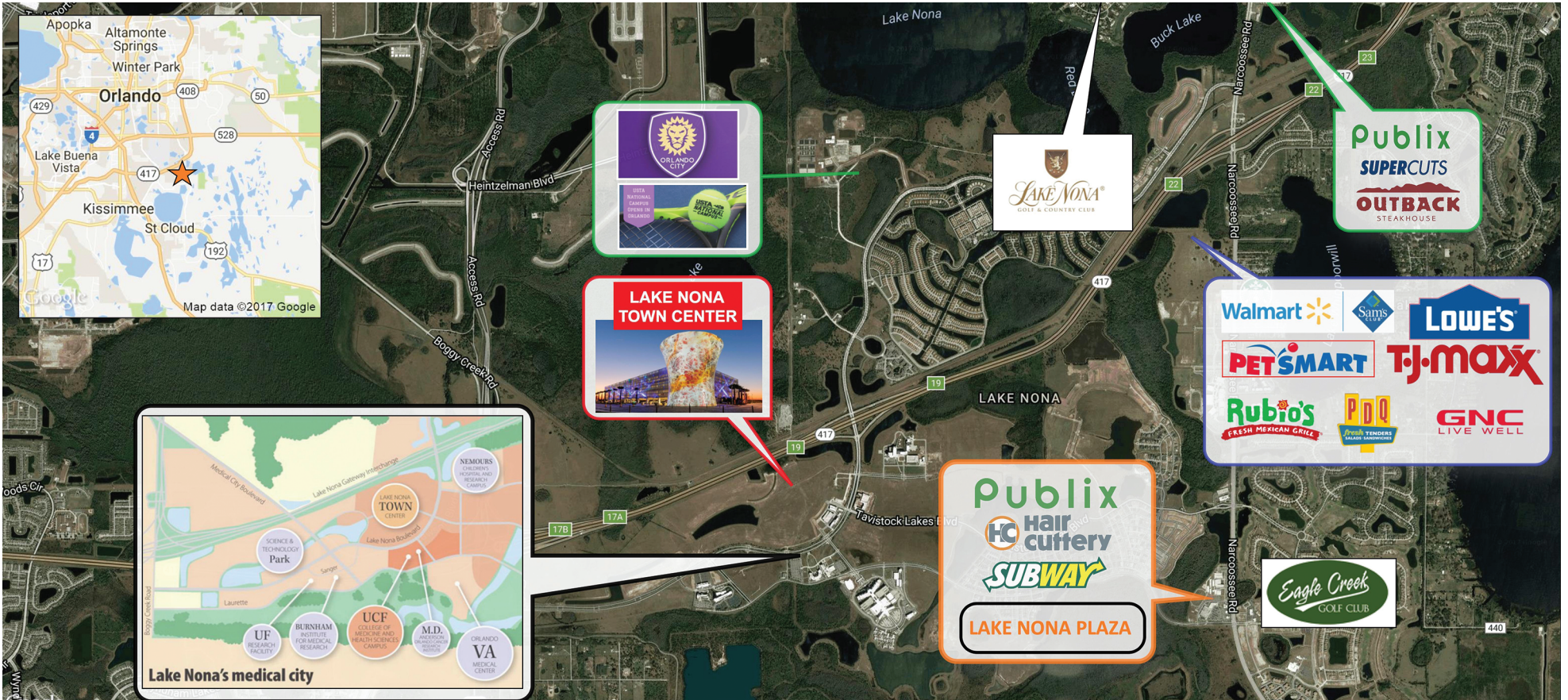




LAKE NONA PLAZA

13900 Narcoosee Road, Orlando, FL 32832



MARKET: Central Florida

COUNTY: Orange

GLA: 69,945 SF

TRAFFIC COUNT: 39,400



	TOTAL POPULATION	MEDIAN AGE	AVG. HH INCOME
1 MILE	7,232	35	\$114,738
3 MILES	23,363	35	\$110,660
5 MILES	60,996	35	\$87,966

JASON REISMAN | LEASING AGENT

jreisman@secenters.com

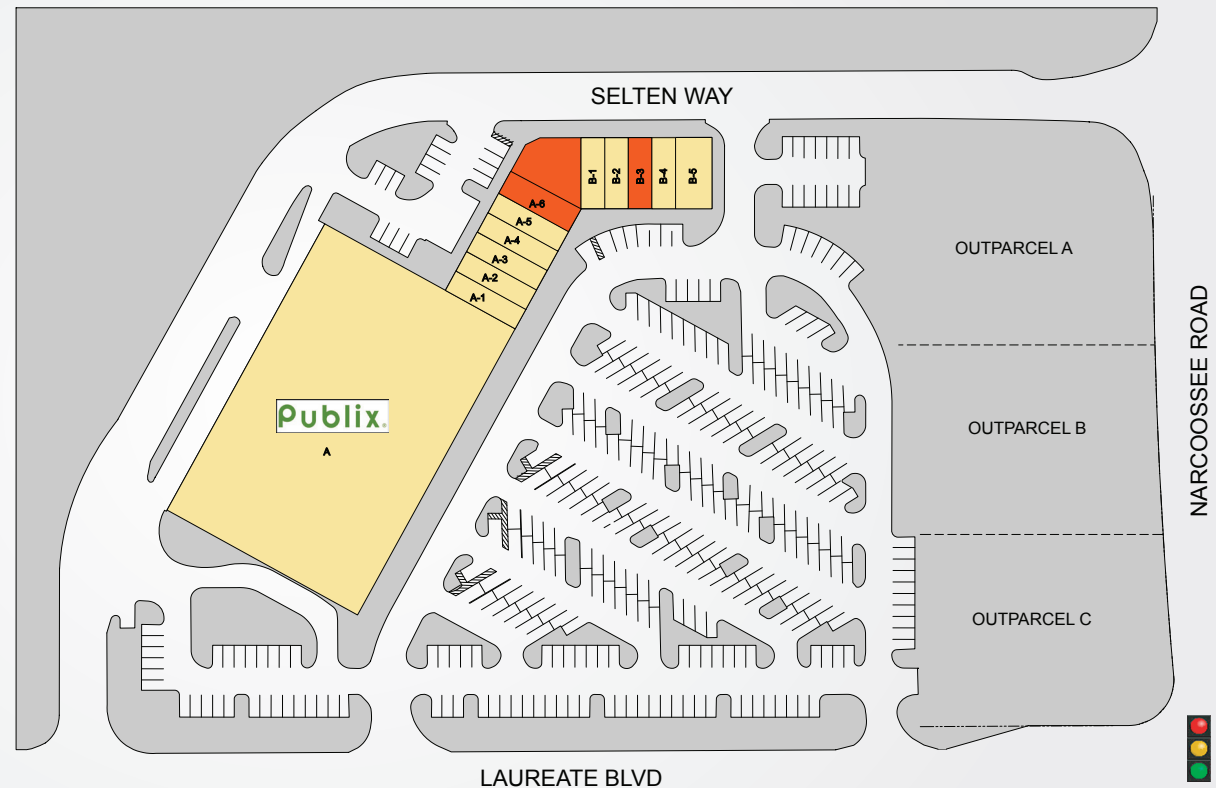
(321) 677-0155 | Mobile (561) 445-5571



WWW.SOUTHEASTCENTERS.COM

LAKE NONA PLAZA

TENANTS	UNIT	SF
Publix	A	54,340
Publix Liquors	A-1	1,400
Hangers Cleaners	A-2	1,400
Lee Spa Nails	A-3	1,400
Lake Nona Eye Care	A-4	1,400
Subway	A-5	1,400
*Anthony Jewelers	A-6	1,400
Lach Orthodontic	B-1	1,253
Hair Cuttery	B-2	1,253
Available	B-3	1,253
Zhang Garden	B-4	1,253
Championship Martial Arts	B-5	2,193
*Available 2/1/2018		Up to 2,375



13900 Narcoossee Road, Orlando, FL 32832

Located at the NW corner of Narcoossee Rd. and Laureate Blvd., this Publix-anchored center serves as the closest grocery-anchored center to Lake Nona Medical City, catering to thousands of employees and students at the health and life sciences cluster as well as the residents of Laureate Park in Lake Nona. The Lake Nona community is a 17-square-mile master-designed community home to five neighborhoods totaling 3,000+ homes, a Sports & Performance District highlighted by the largest tennis facility in the world and Lake Nona's Medical City – a 650-acre health and life sciences park. Lake Nona has created nearly 5,000 permanent, higher-paying jobs with 25,000 more expected by 2029.

Best-in-class service and value creation through diligent, return-driven property management, leasing, development, and construction management



This site plan shows the approximate location, square footage, and configuration of the shopping center and adjacent areas, and is only illustrative of the size and relationship of the stores and common areas generally, all of which are subject to change. The showing of any names of tenants, parking spaces, square footage, curb-cuts or traffic controls shall not be deemed to be a representation or warranty that any tenants will be at the shopping center, the square footage is accurate, or that any parking spaces, curb-cuts or traffic controls do or will continue to exist. Moreover, any demographics set forth in this flyer are for illustrative purposes only and shall not be deemed a representation by Landlord or their accuracy.