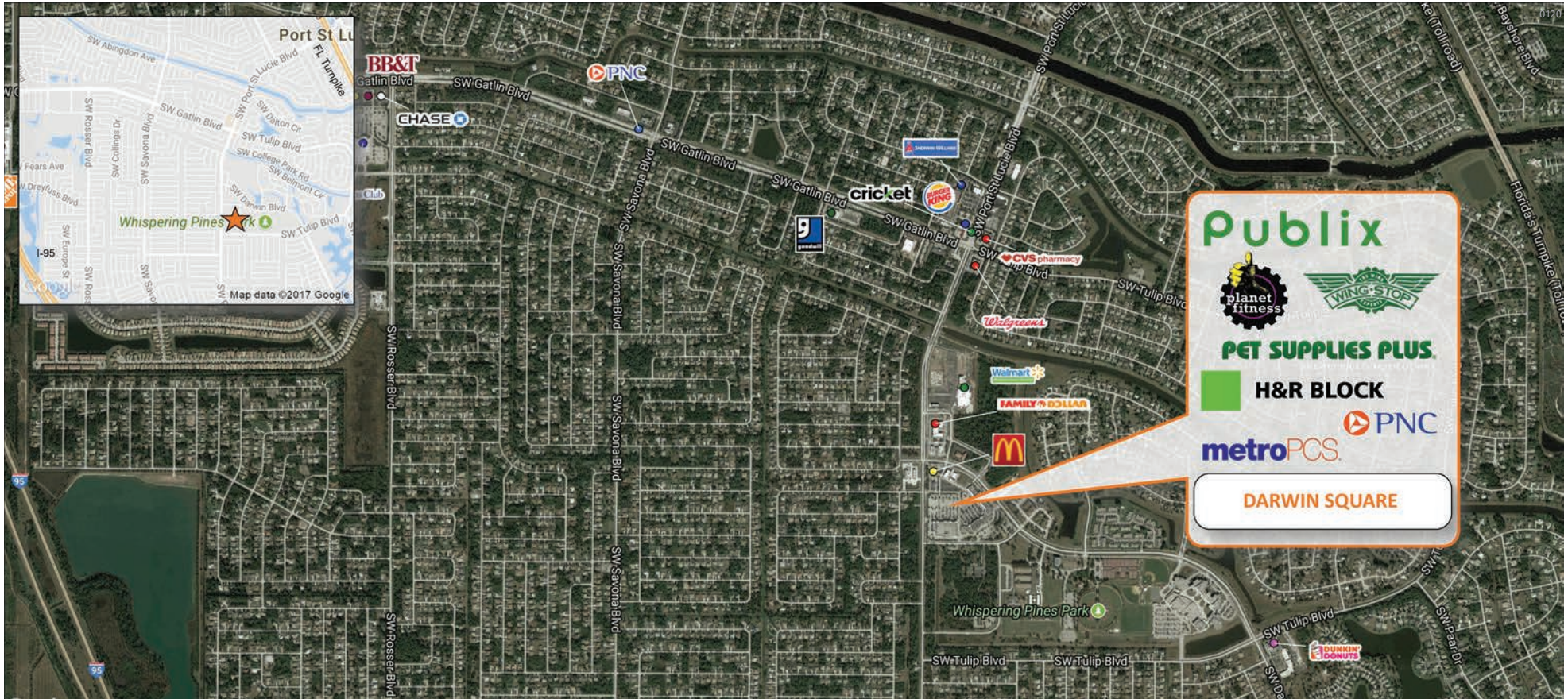




DARWIN SQUARE

3253 S.W. Port St. Lucie Blvd., Port St. Lucie, FL 34953

PORT ST. LUCIE, FL



MARKET: Central Florida

COUNTY: St. Lucie County

GLA: 127,918 SF

TRAFFIC COUNT: 20,794



	TOTAL POPULATION	MEDIAN AGE	AVG. HH INCOME
1 MILE	10,386	35.9	\$69,157
3 MILES	73,572	37.2	\$71,792
5 MILES	136,391	41	\$73,268

MEREDITH VOGEL | LEASING AGENT

mvoegel@secenters.com

(561) 347-0888 | Mobile (561) 420-9718

**SOUTHEAST
CENTERS**

WWW.SOUTHEASTCENTERS.COM

DARWIN SQUARE

TENANTS	UNIT	SF	TENANTS	UNIT	SF
Wingstop	1	2,000	Treasure Coast Hospice Thrift Boutique	U106-U108	4,187
Available	4	1,195	Available	62	1,525
Massimos Pizza	5	1,910	Airoso Cleaners	64	1,345
Cell Medic	7	1,239	Available	68	1,648
ZINGA! Frozen Yogurt	10	1,860	Chinatown Restaurant	70	1,324
H&R Block	13	1,549	Next Level Insurance	73	1,150
Available	15	1,488	Publix Super Markets	E	54,340
Available	16	1,662	Metro PCS	E101	1,350
Pet Supplies Plus	20A	8,492	Town Jewelers	E103	900
Comp Liquors	20	1,858	Available	E104	900
Jose A. Sarasola Dentistry	25	1,550	The Boutique Hair Salon	E105	900
DC & Y Nails	26-27	1,859	Leslie's Pool Mart	E106 -E108	2,700
Planet Fitness	28-45	14,385			
Mane Design Haircuts	50	1,239			
Expedition Chiropractic	53	1,550			
Kaede Hibachi	U101	1,675			
Available	U102	1,256			
Keke's Breakfast Café	U103-U104	5,069			
Florida Community Health	U105	3,813			



3253 S.W. Port St. Lucie Blvd., Port St. Lucie, FL 34953

Darwin Square is located at the intersection of SW Port St. Lucie Blvd & Darwin Blvd in Port St. Lucie. It features a collection of anchors including Publix, Planet Fitness, with its newest addition, Pet Supplies Plus. The center recently received a new contemporary color scheme, enhancing the center's curb appeal and improving the shopping experience for both customers and tenants alike.

Best-in-class service and value creation through diligent, return-driven property management, leasing, development, and construction management



This site plan shows the approximate location, square footage, and configuration of the shopping center and adjacent areas, and is only illustrative of the size and relationship of the stores and common areas generally, all of which are subject to change. The showing of any names of tenants, parking spaces, square footage, curb-cuts or traffic controls shall not be deemed to be a representation or warranty that any tenants will be at the shopping center, the square footage is accurate, or that any parking spaces, curb-cuts or traffic controls do or will continue to exist. Moreover, any demographics set forth in this flyer are for illustrative purposes only and shall not be deemed a representation by Landlord or their accuracy.